

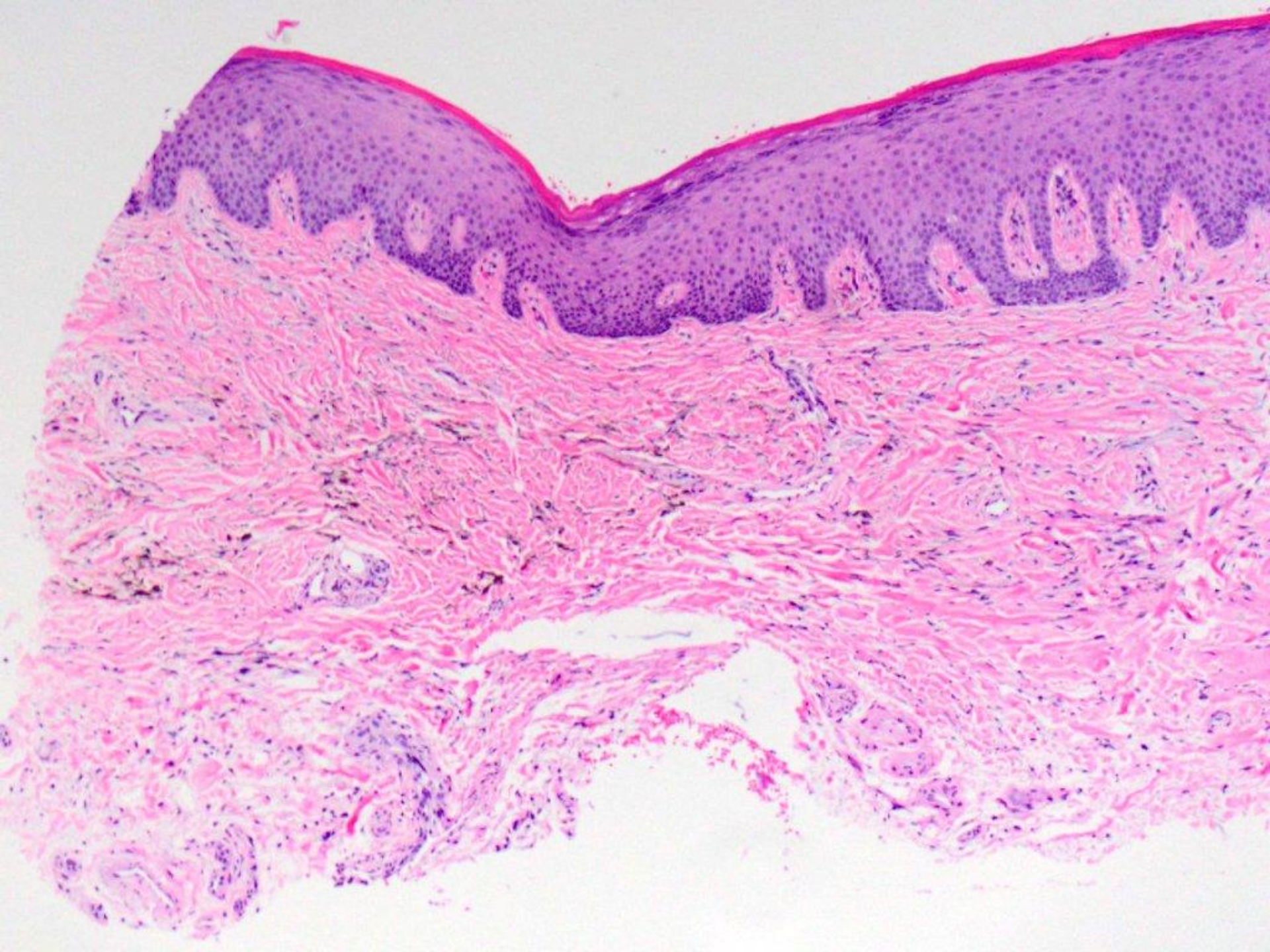
Oral Histopathology

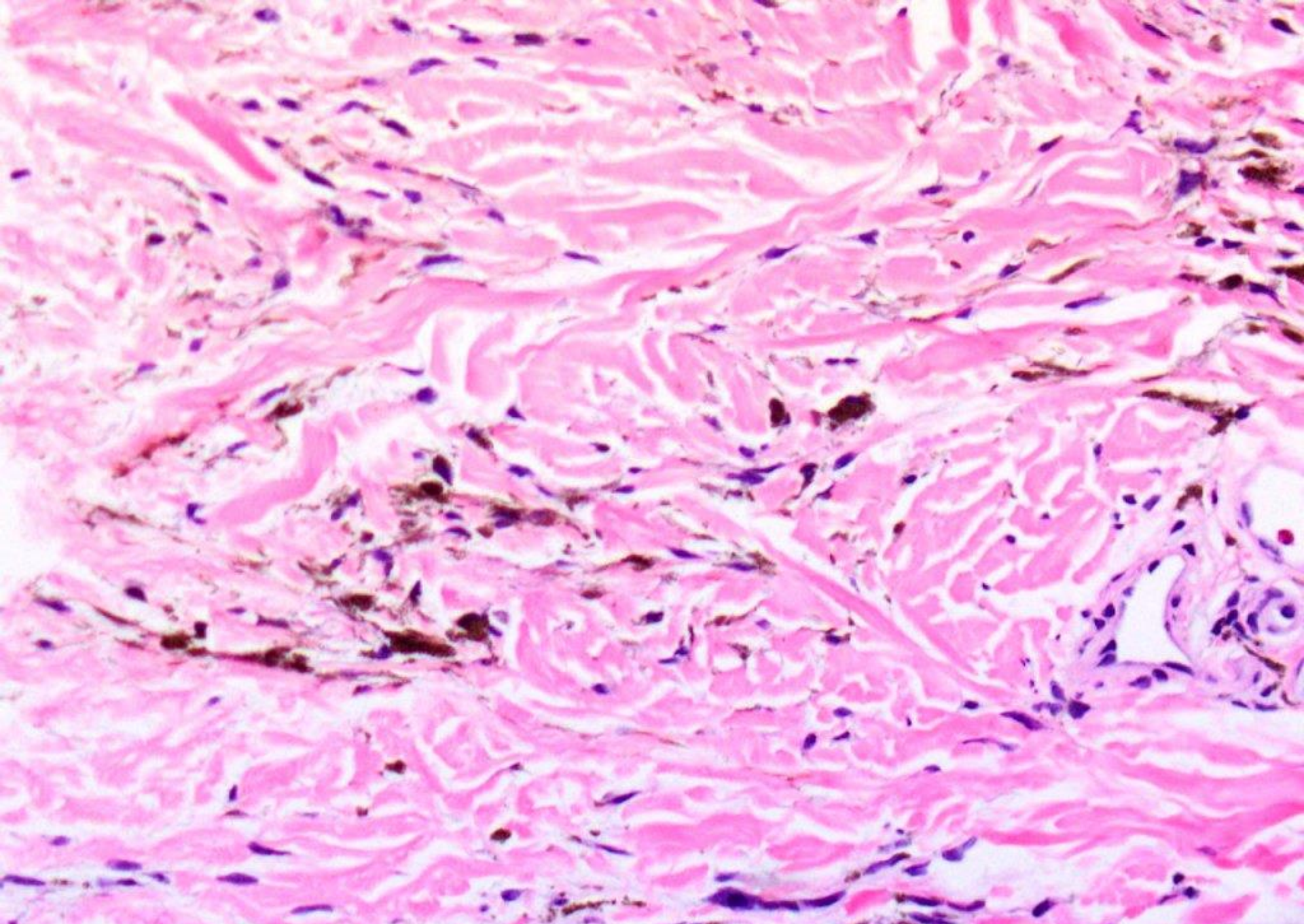
Series 9

DAVID E. KLINGMAN, DMD

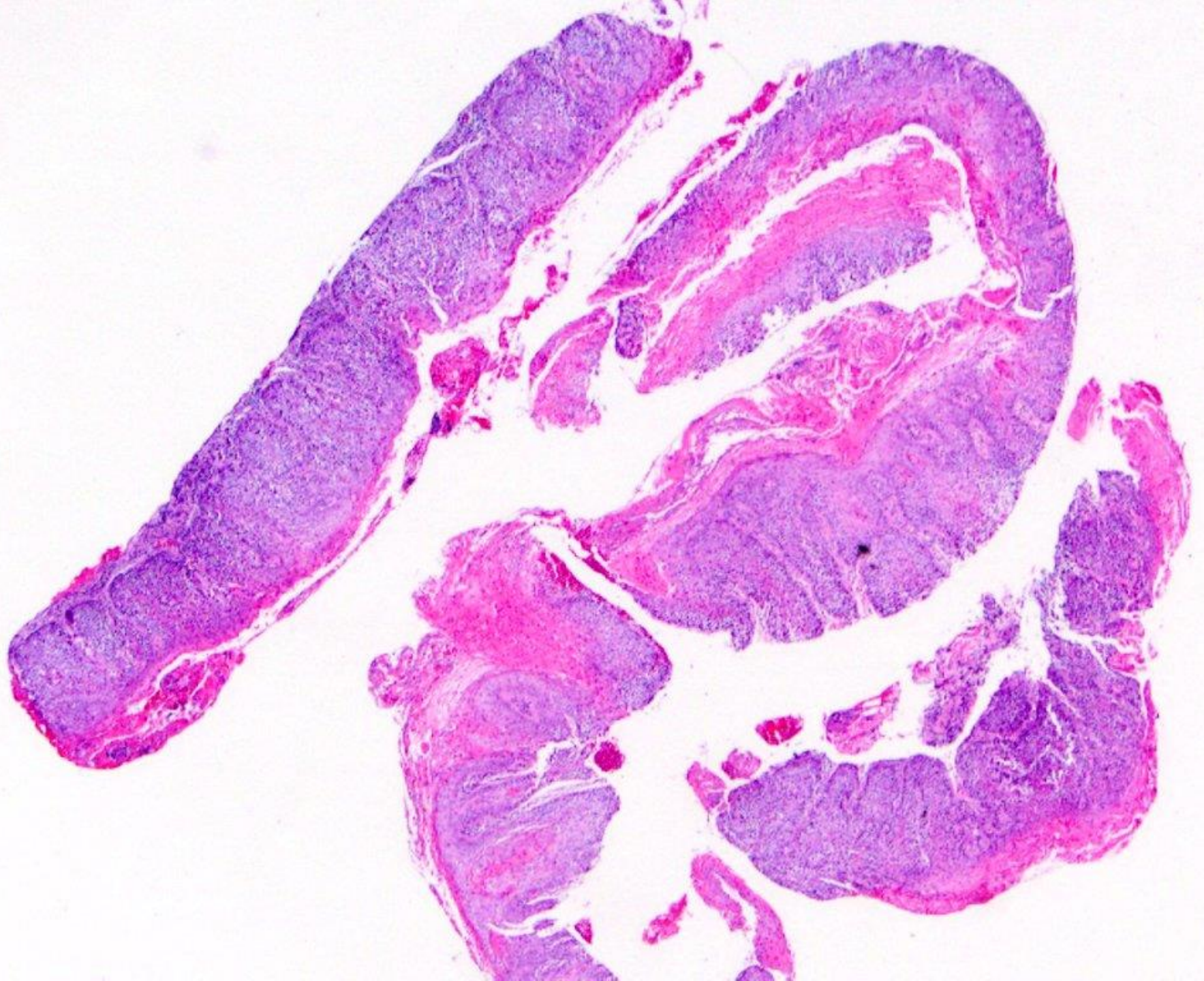
Diplomate, American Board of Oral and Maxillofacial Pathology

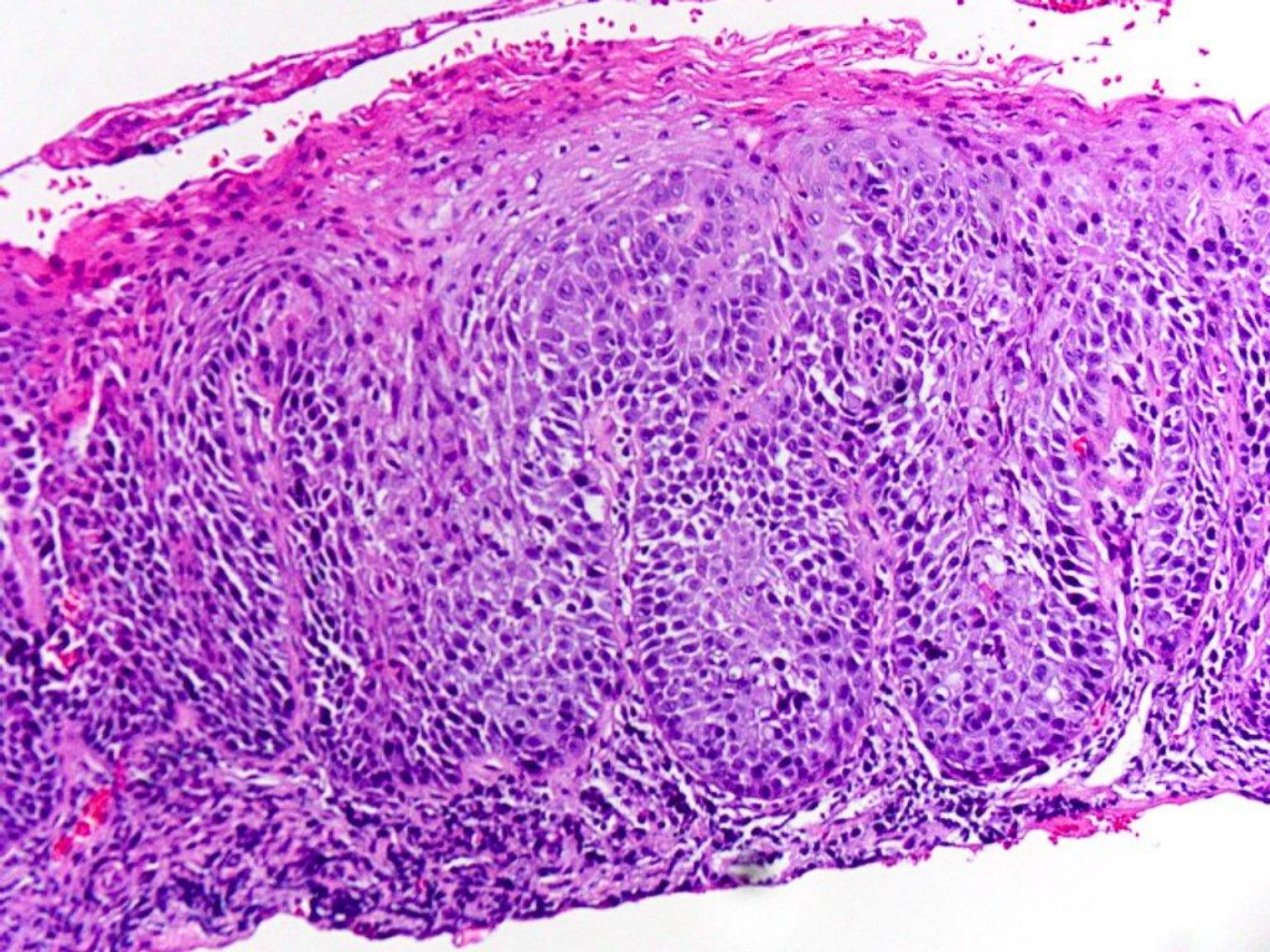
Diplomate, American Board of General Dentistry

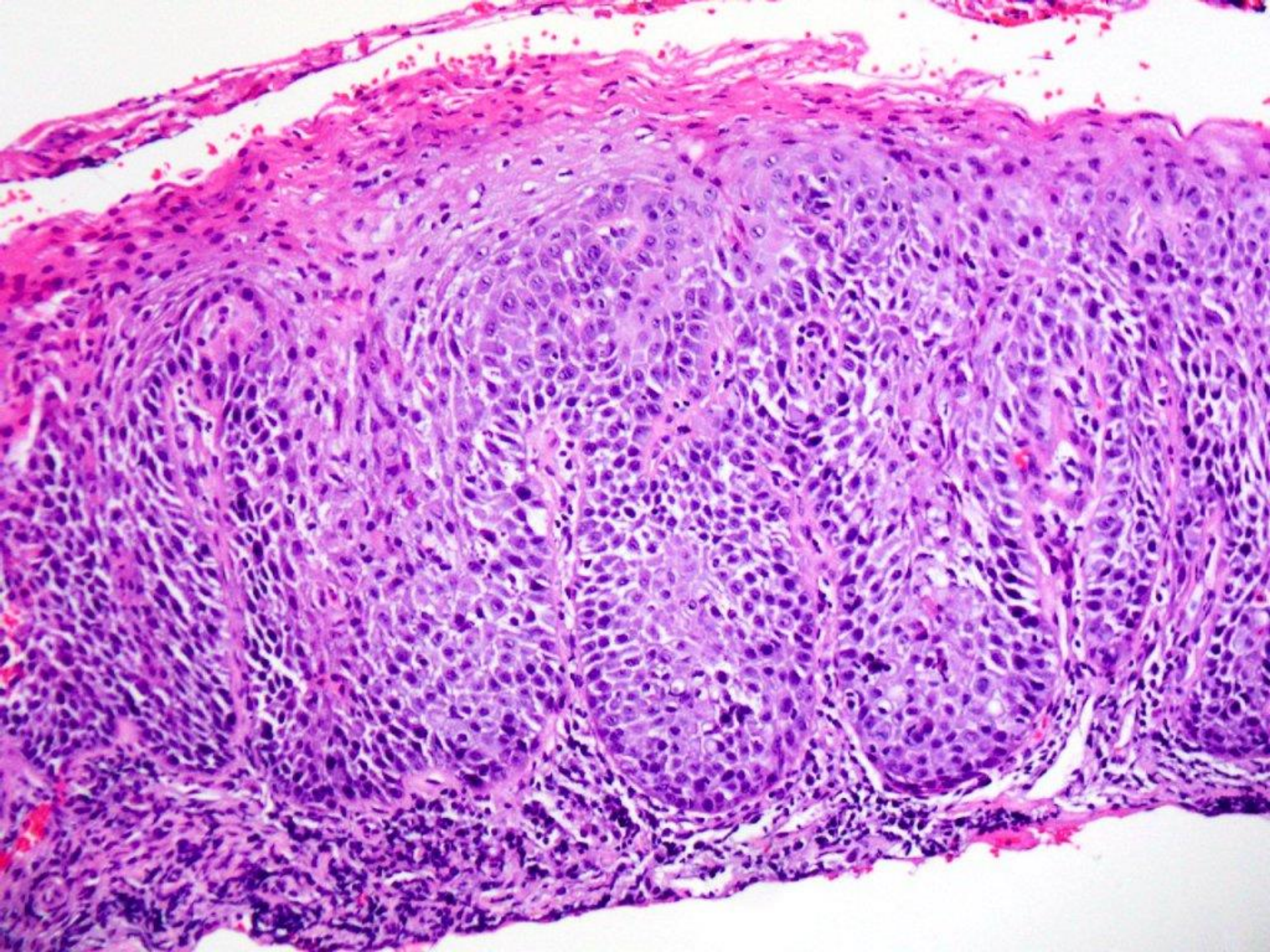


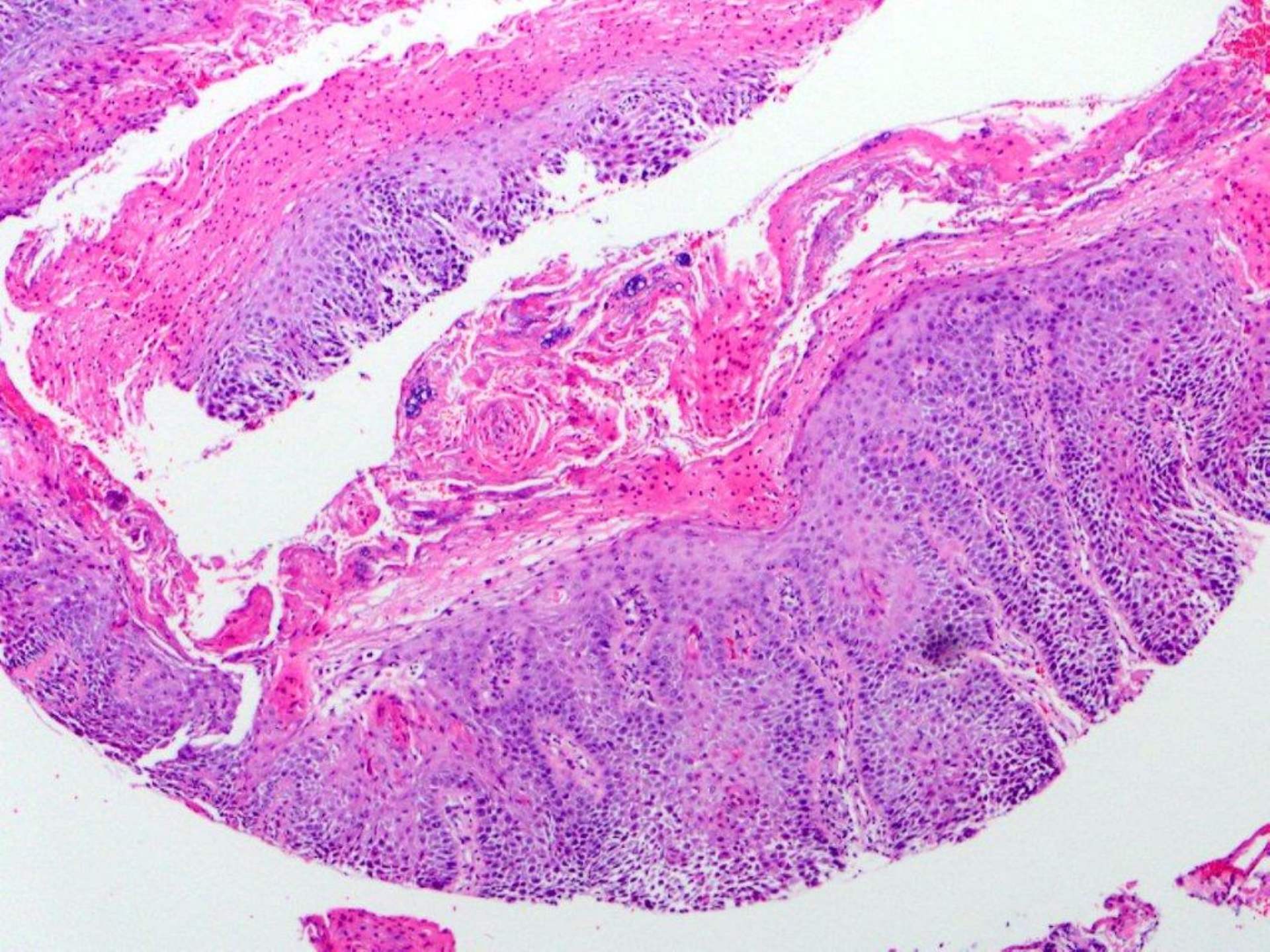


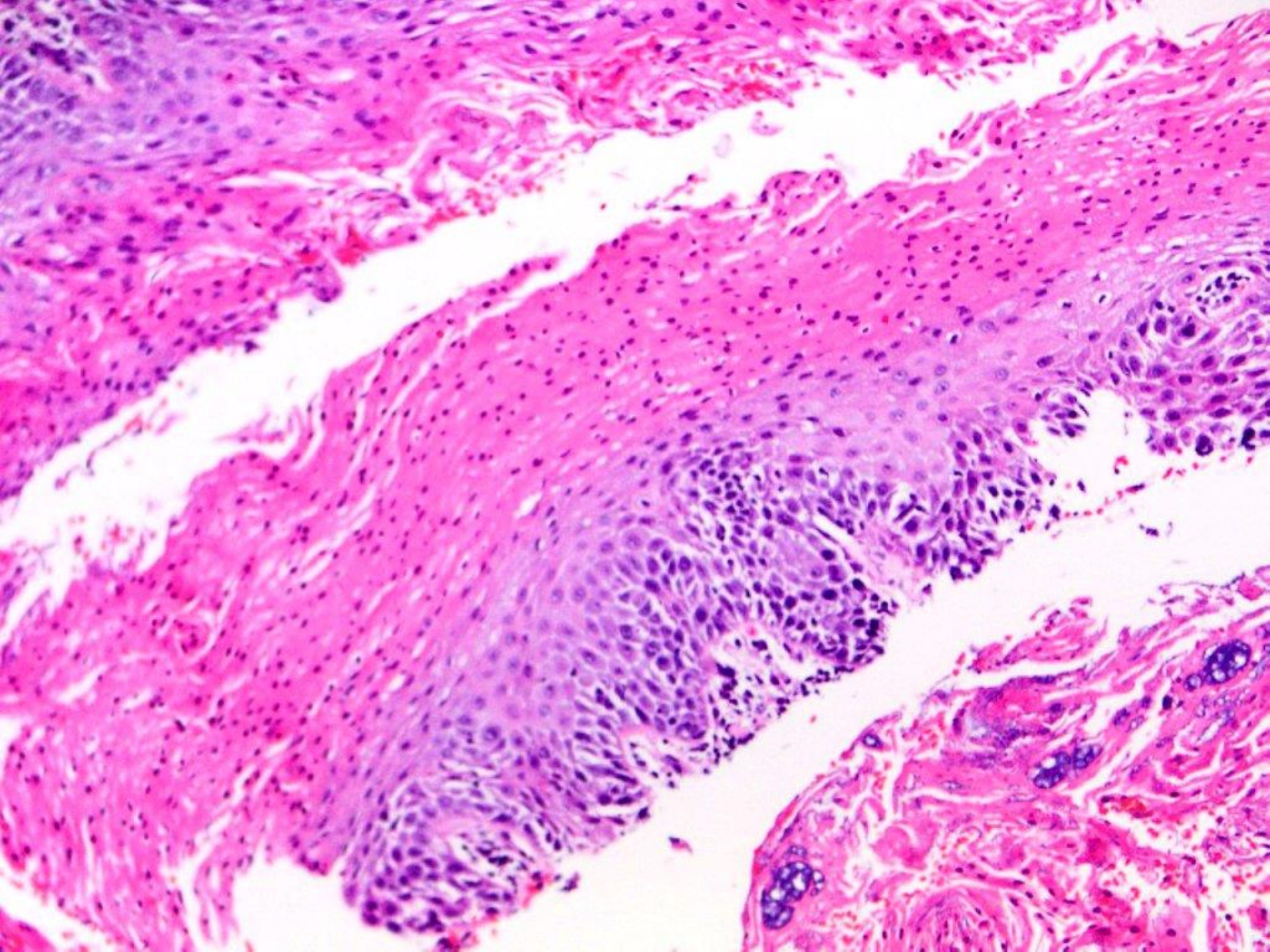
blue nevus

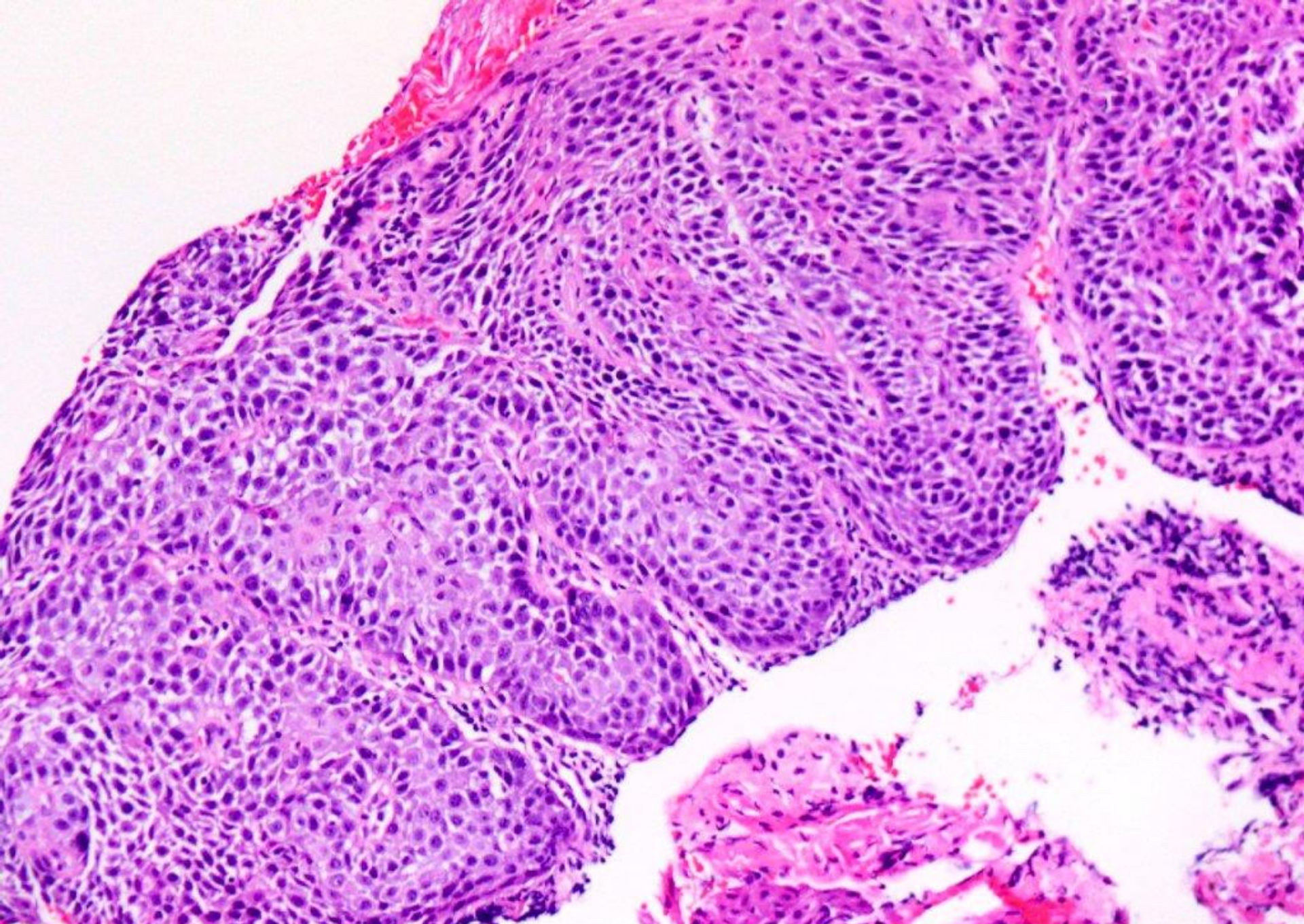




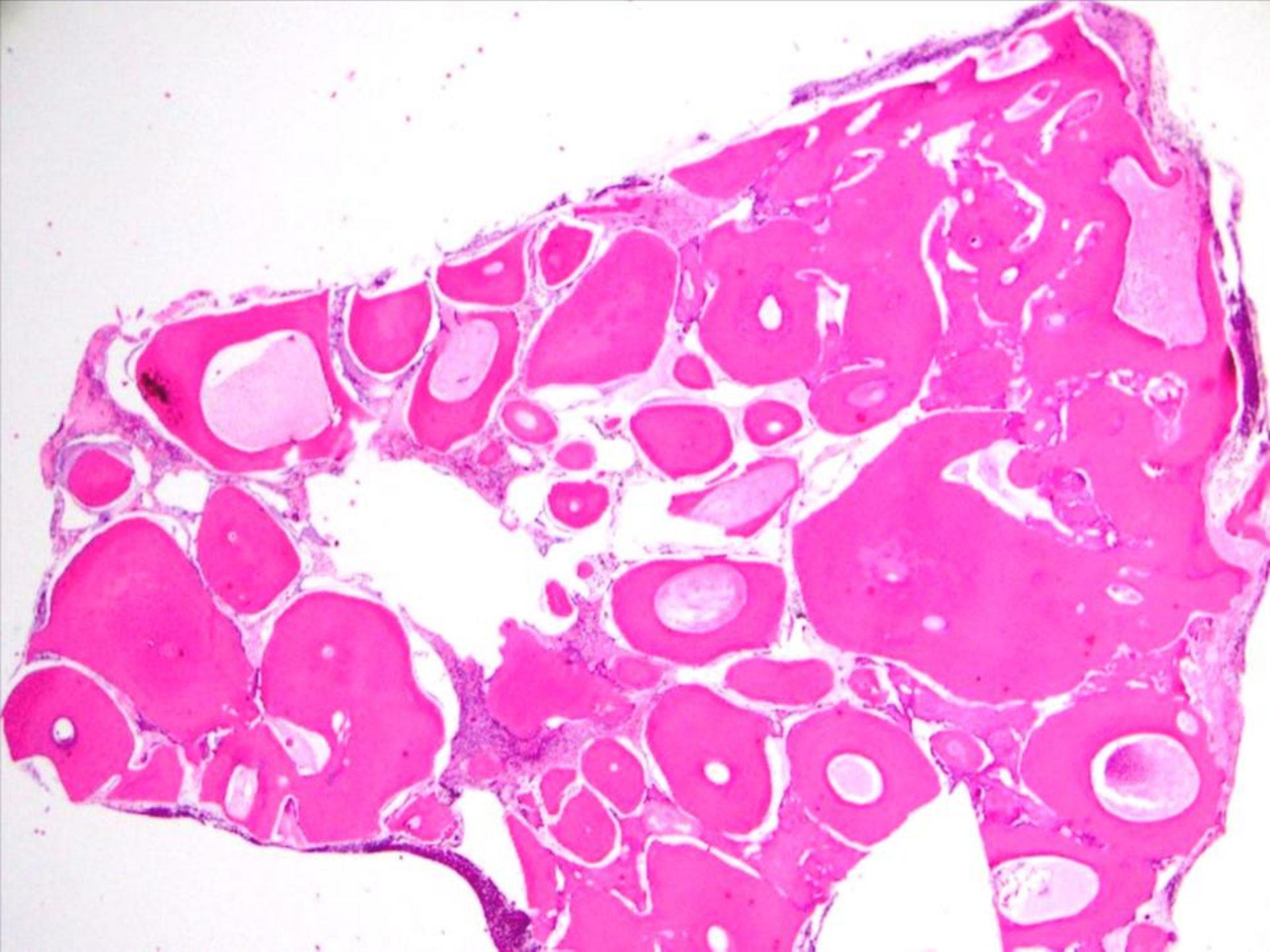


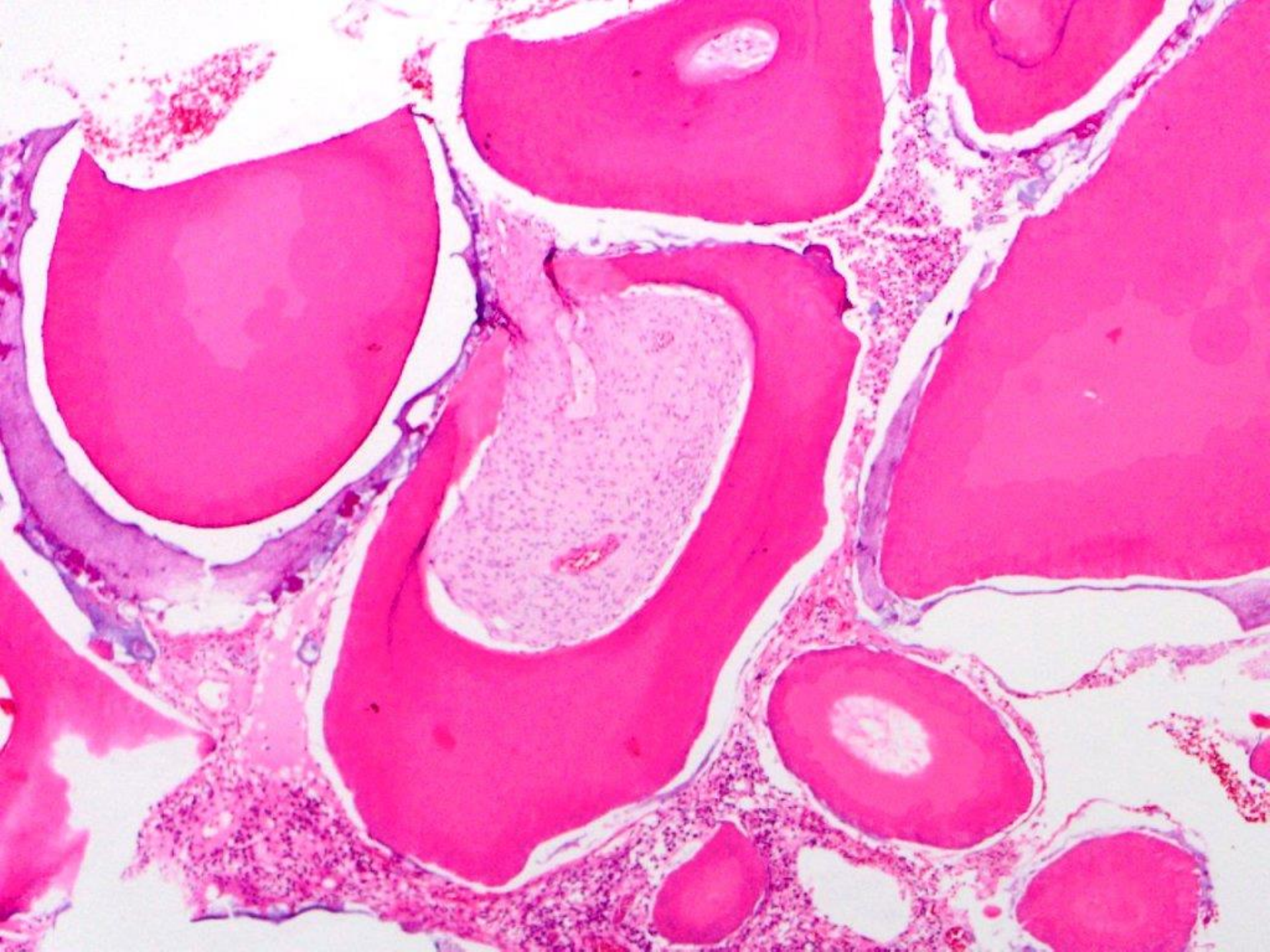


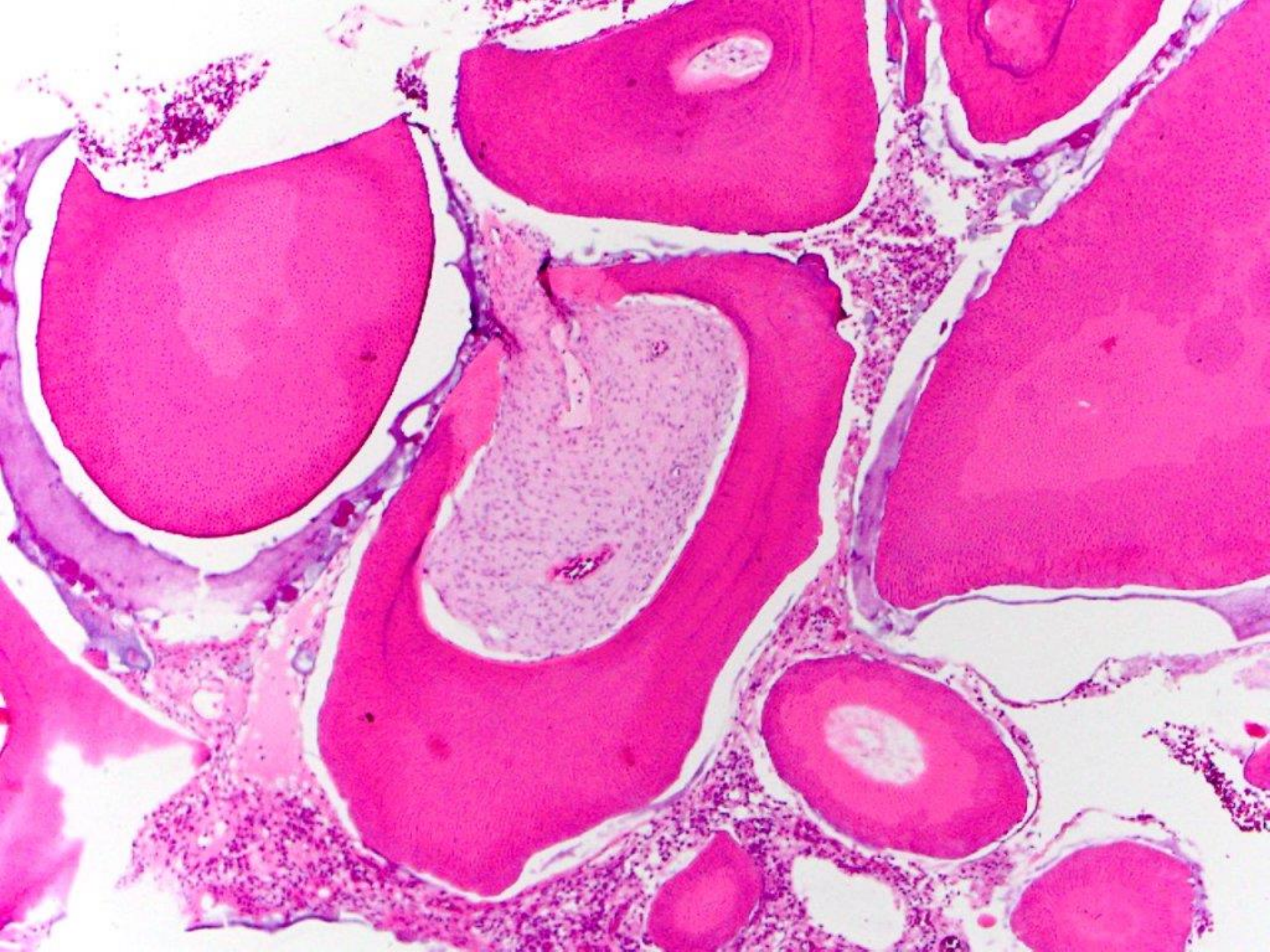


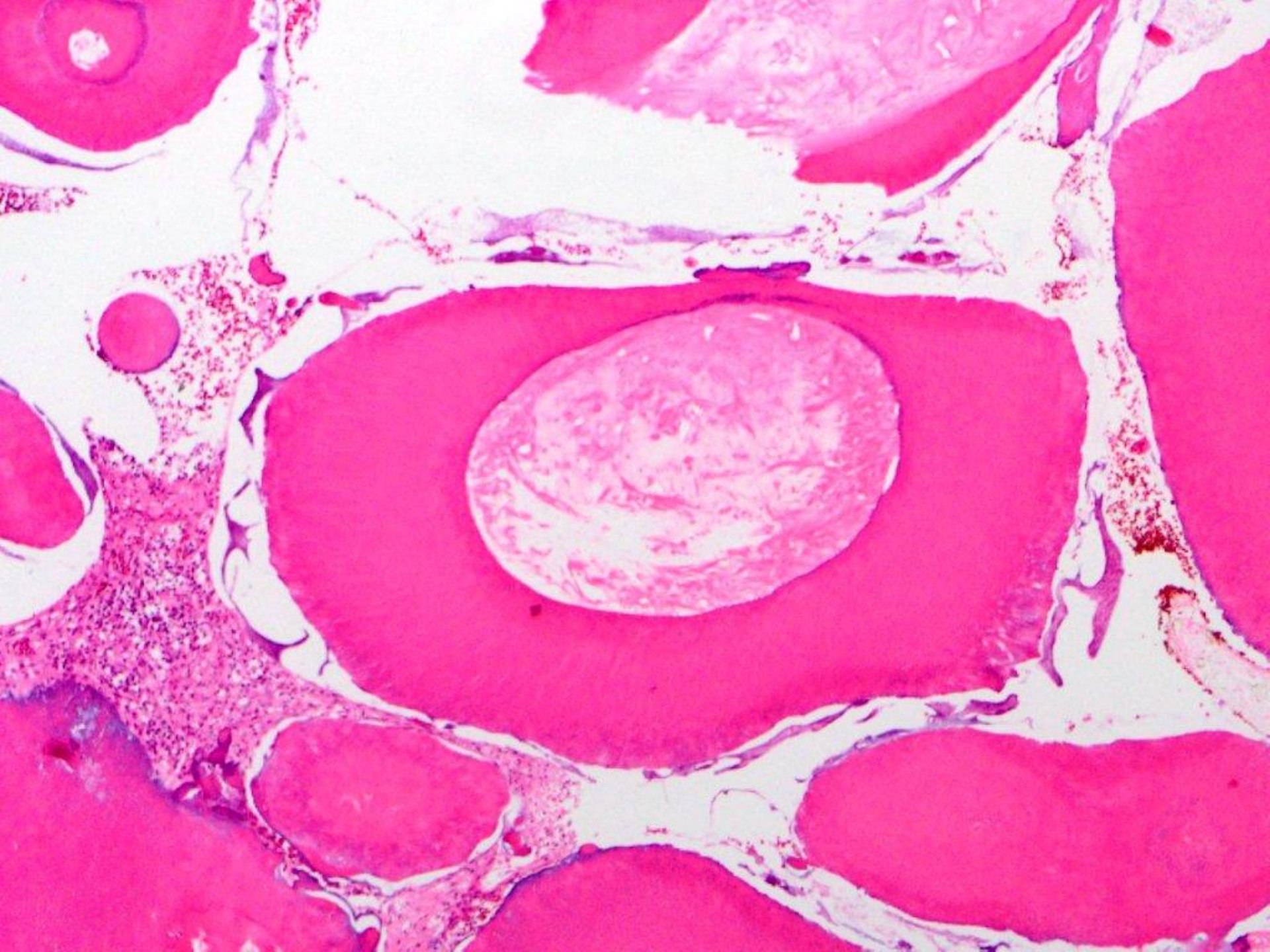


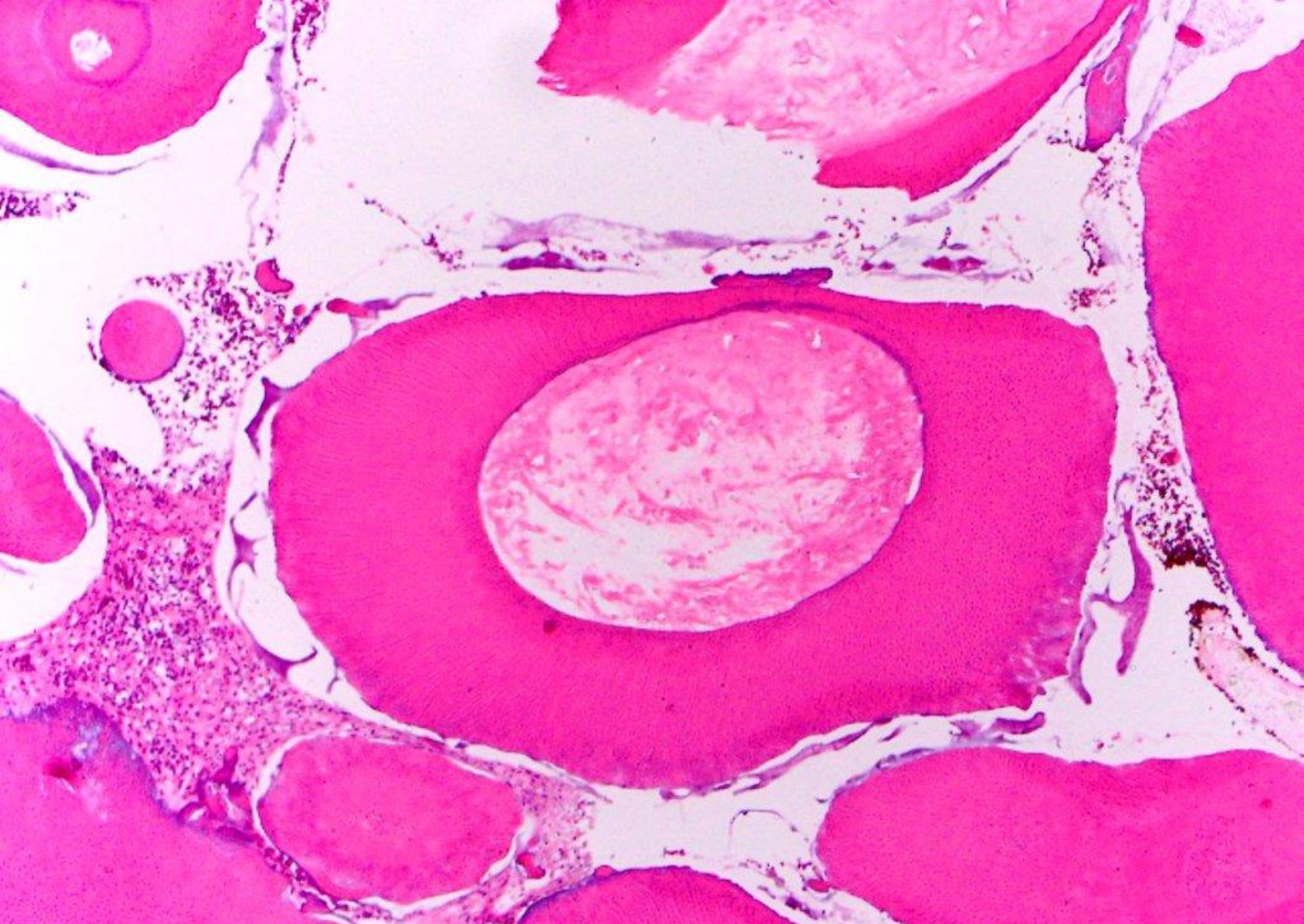
severe epithelial dysplasia



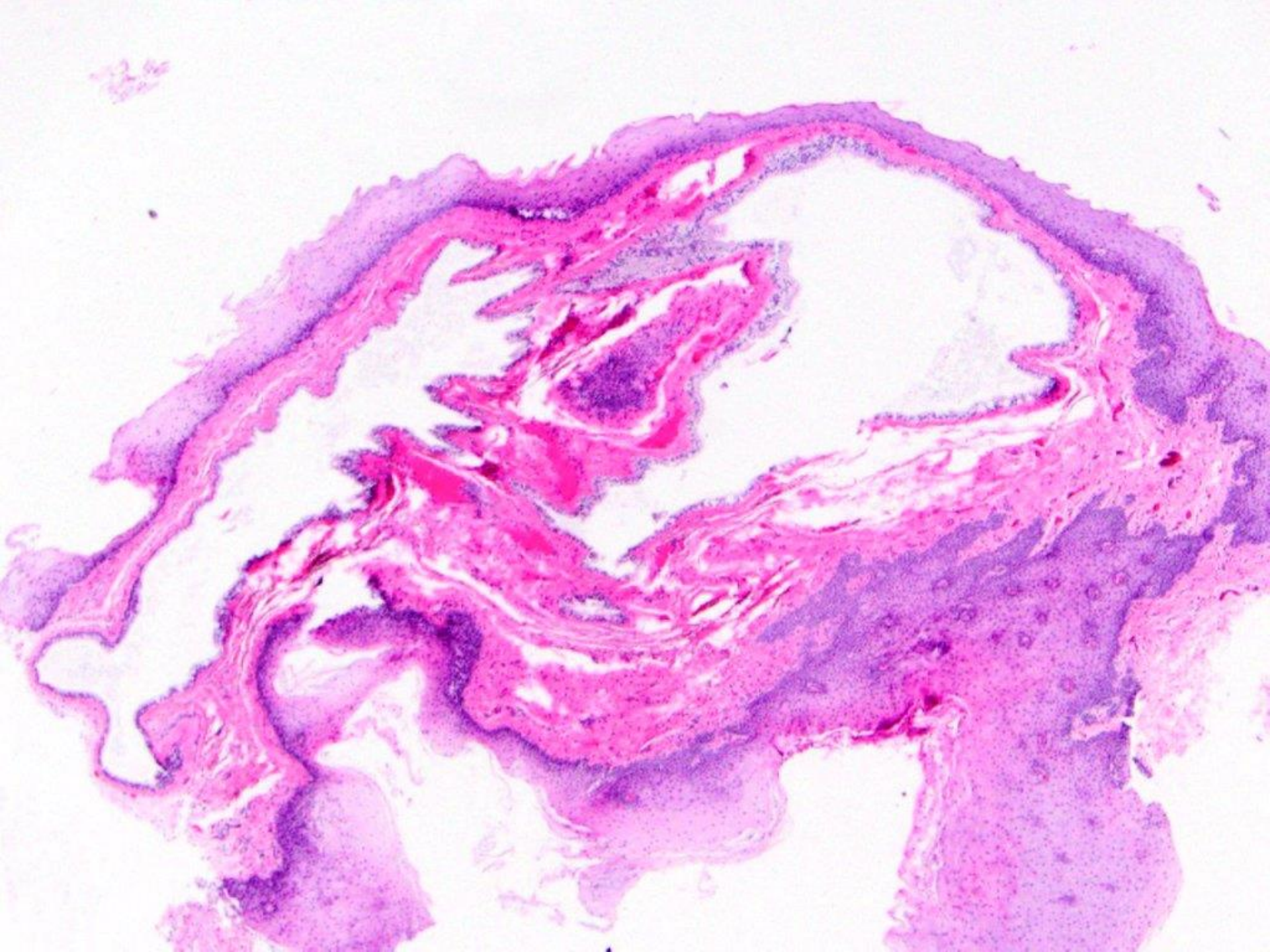


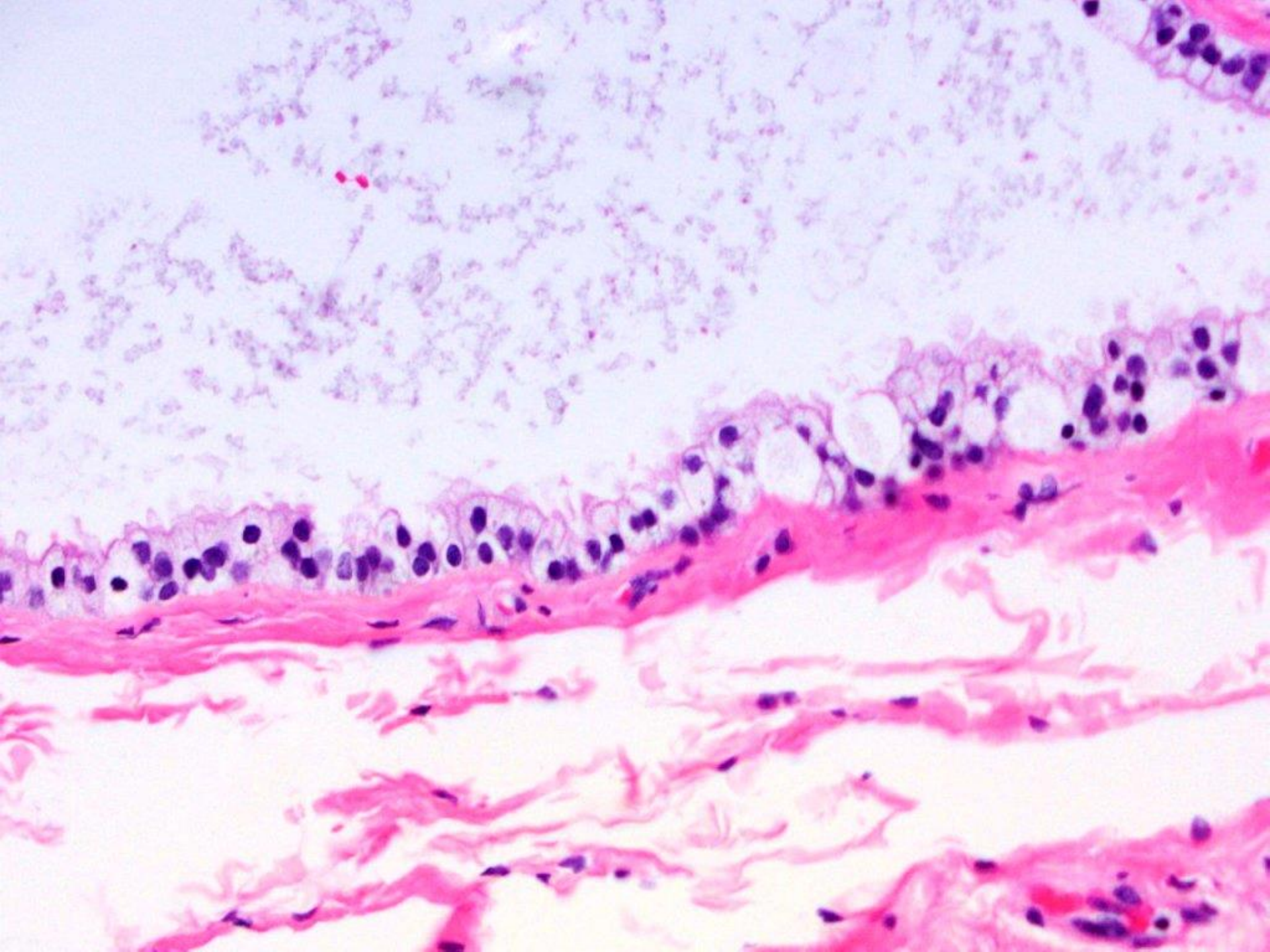


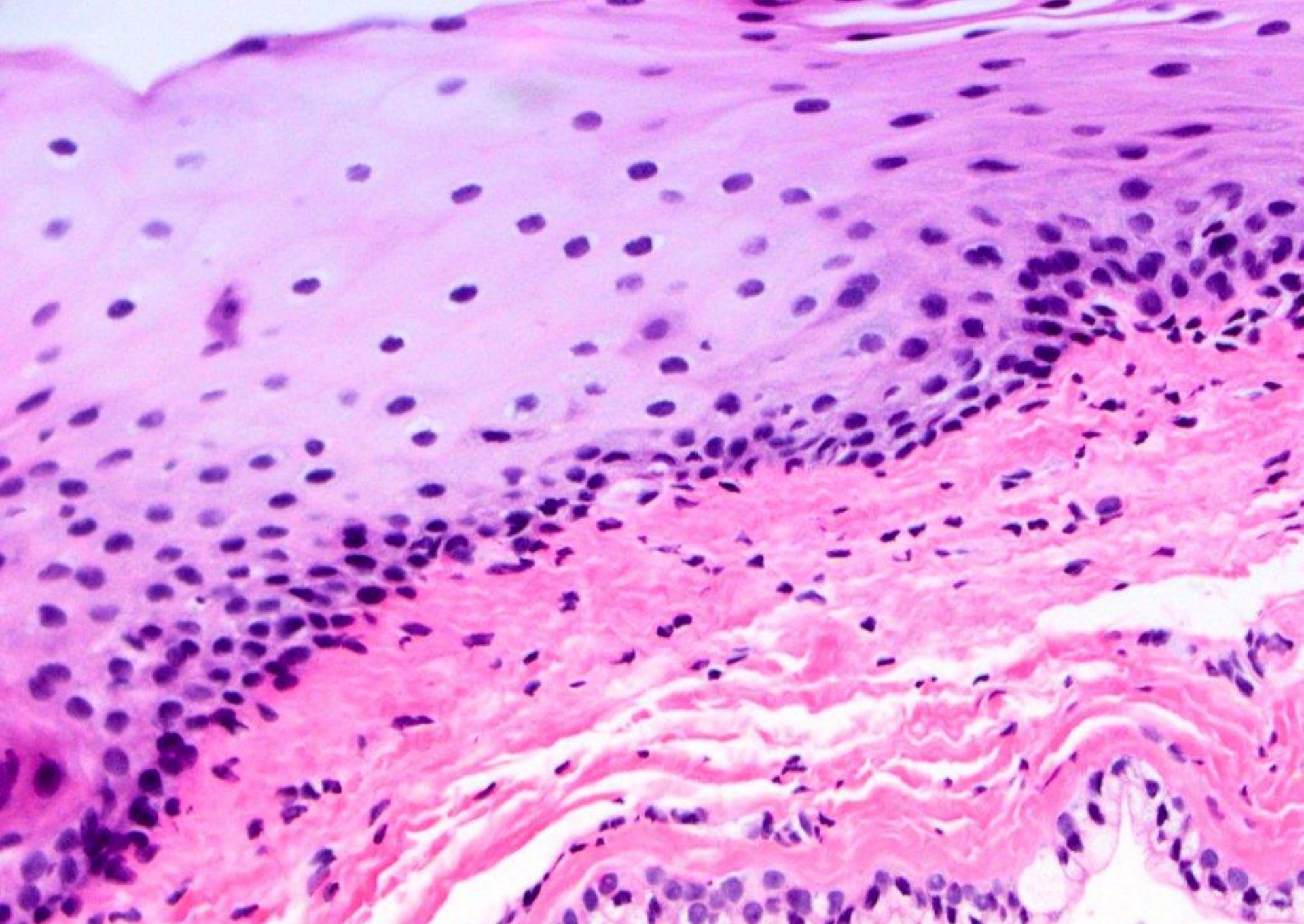




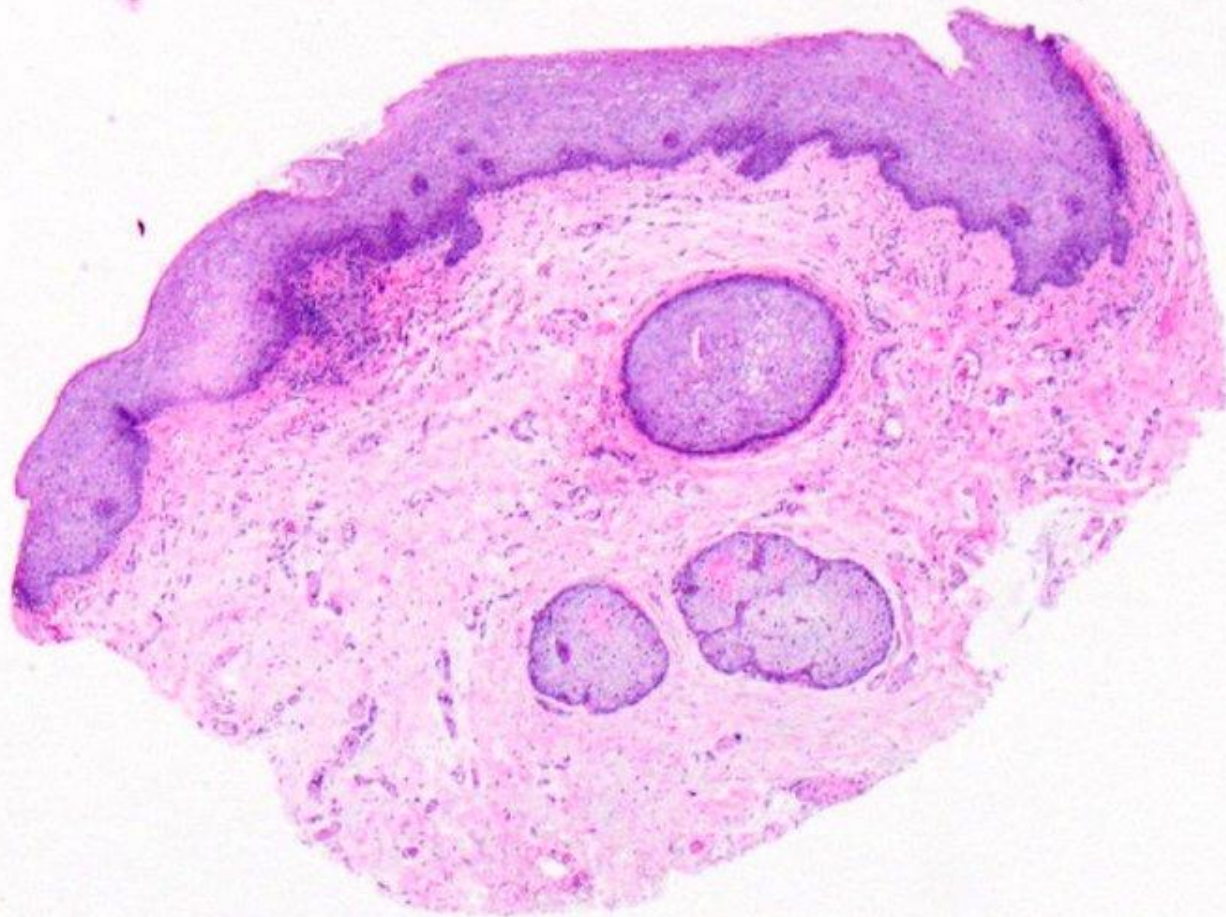
complex odontoma

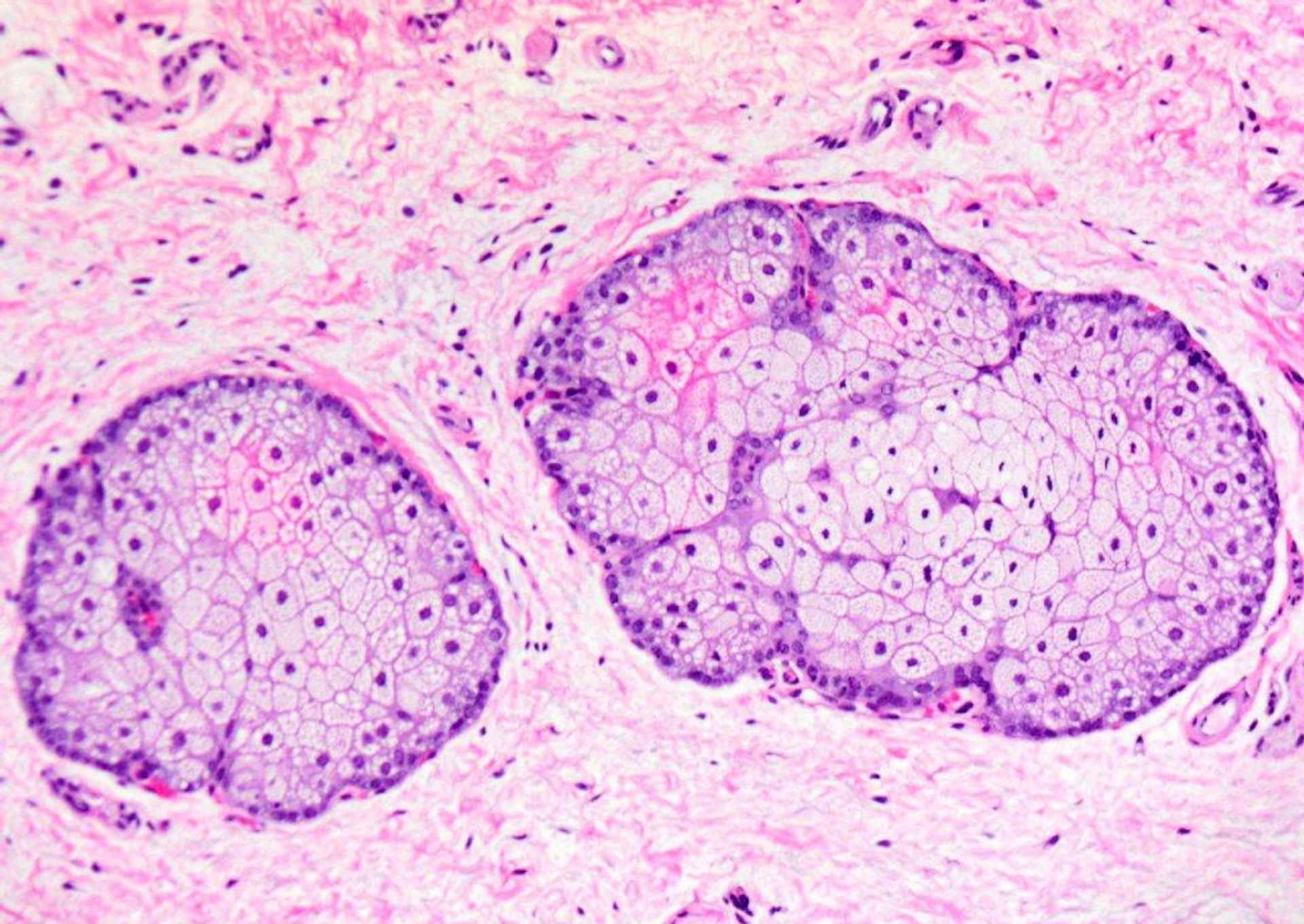




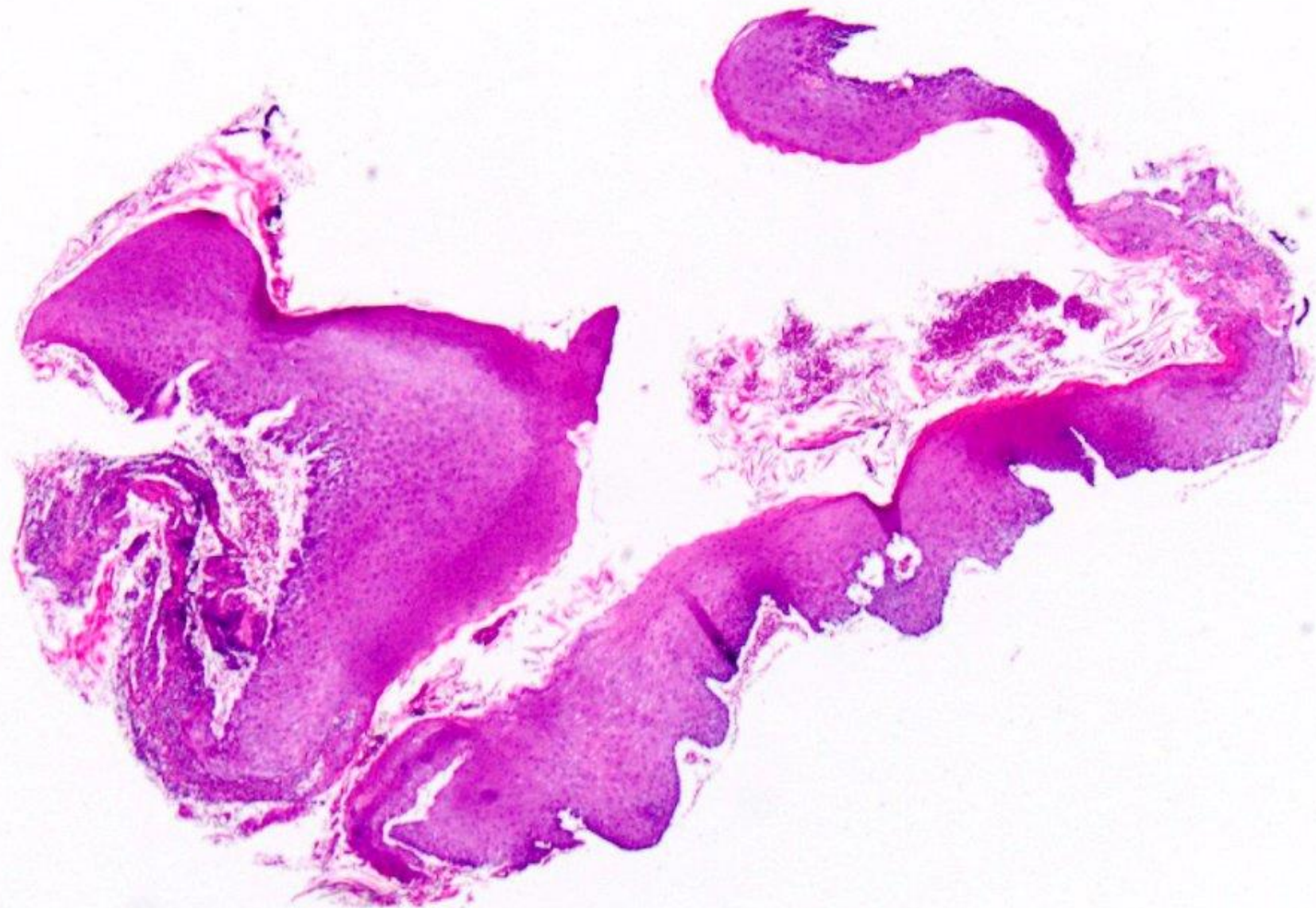


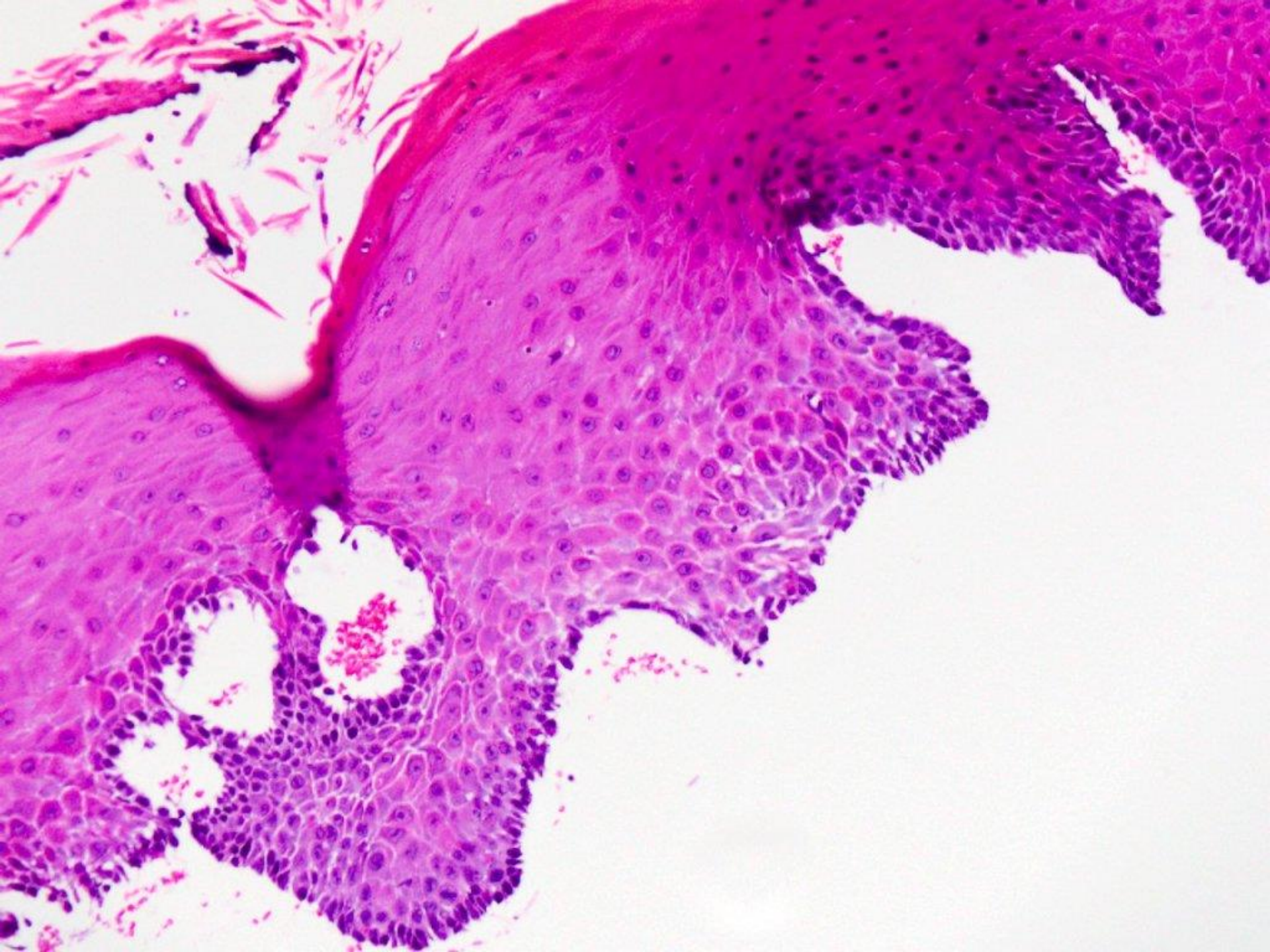
salivary duct cyst

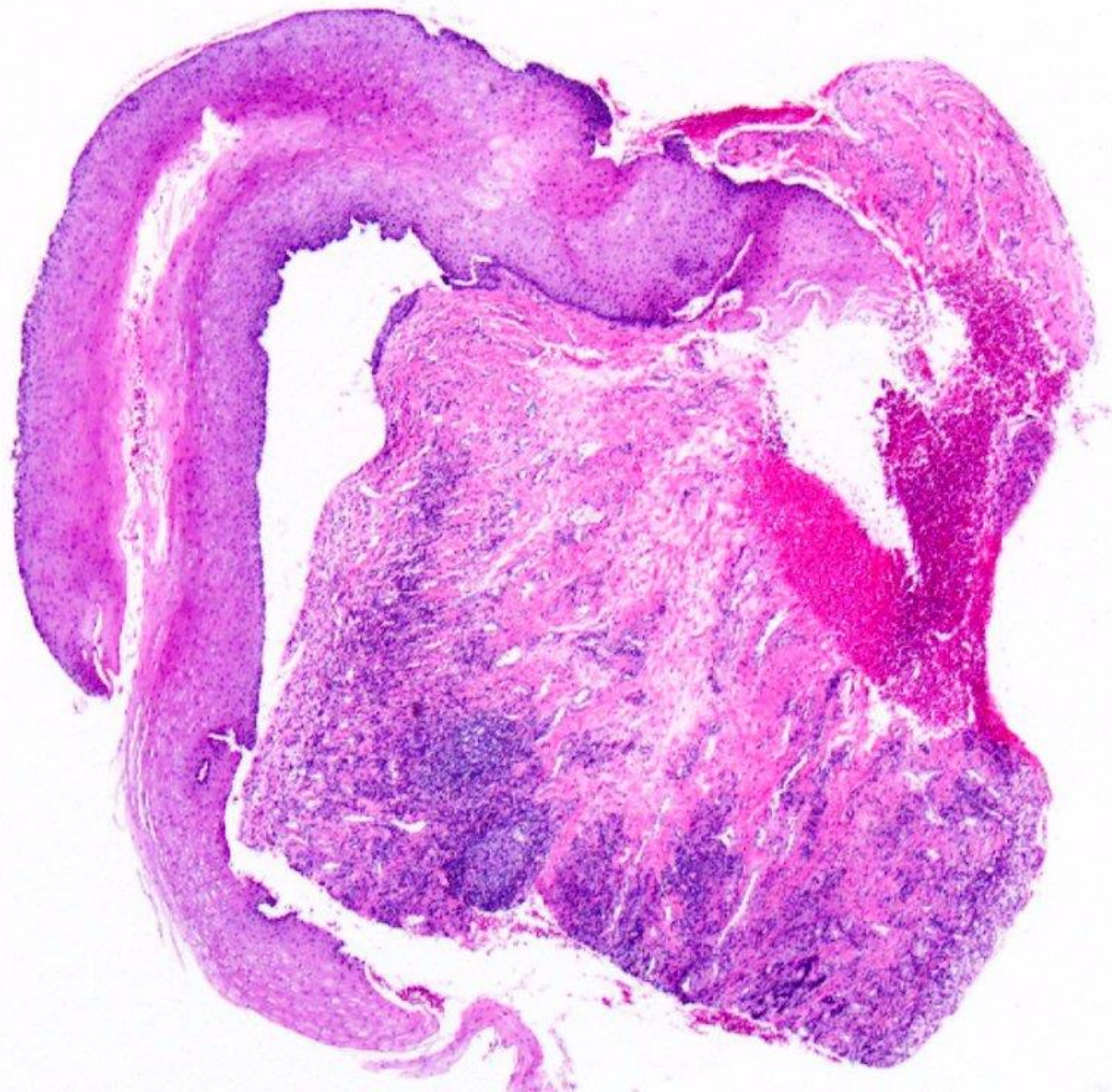


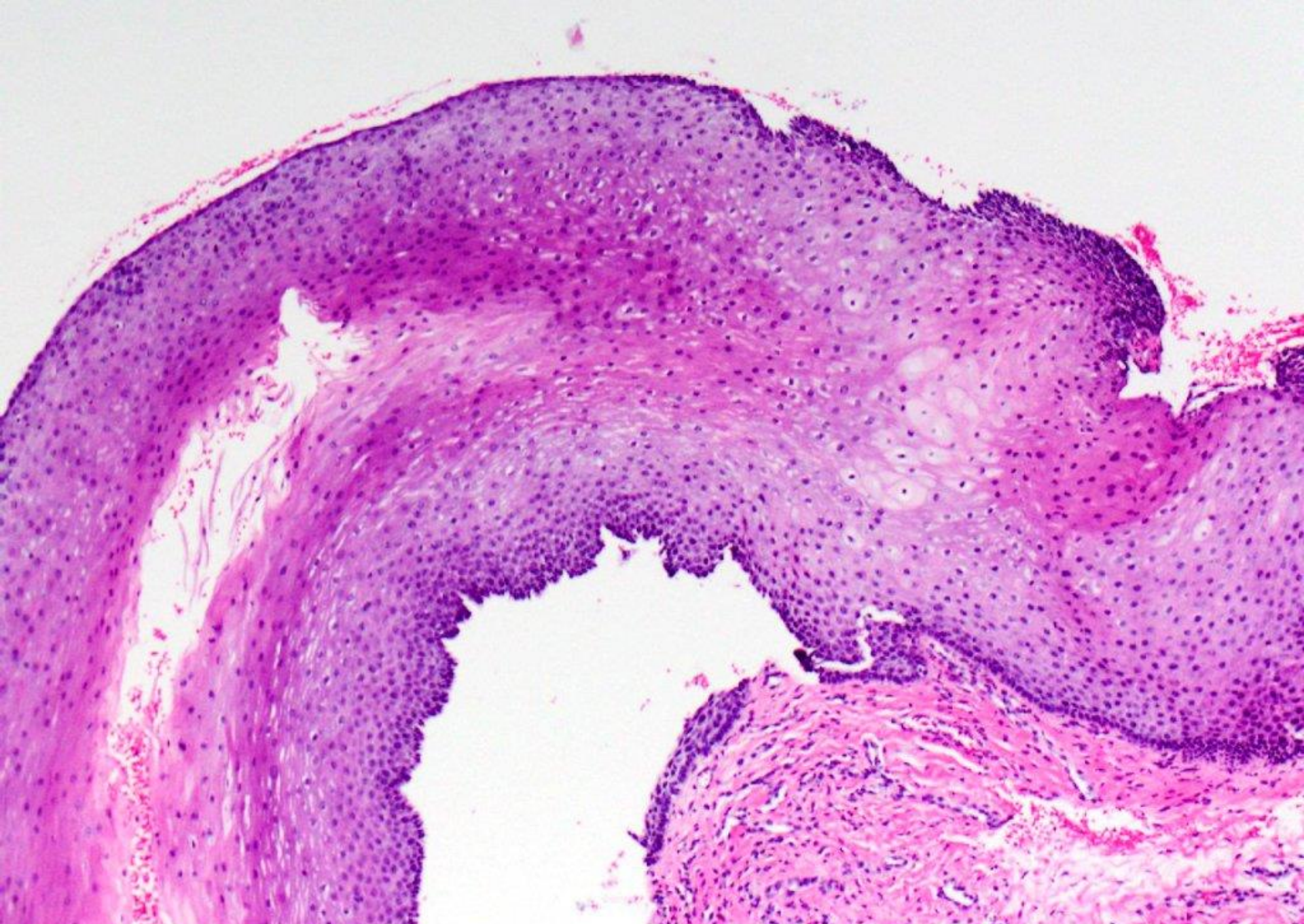


Fordyce granules (sebaceous elements)

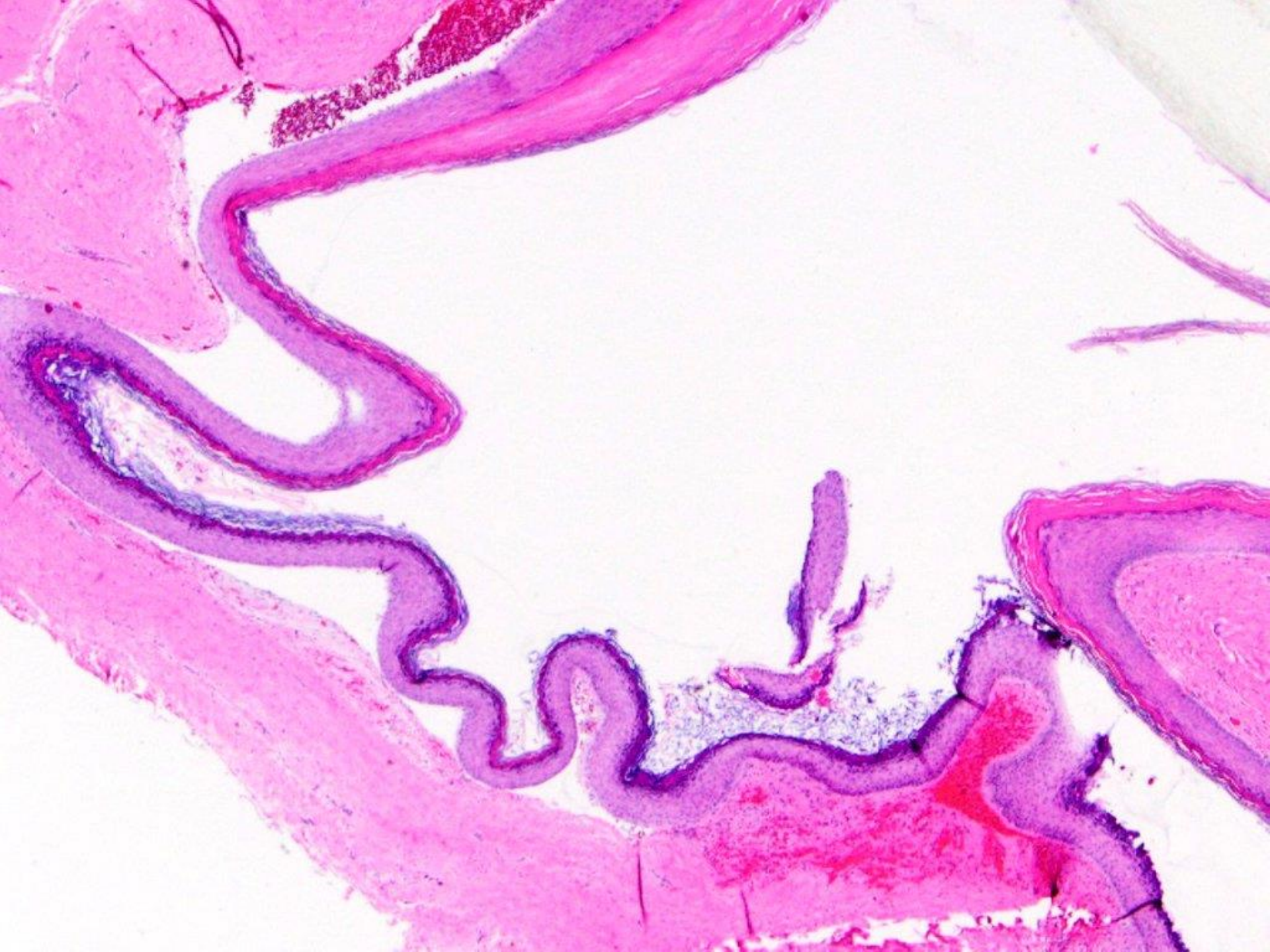


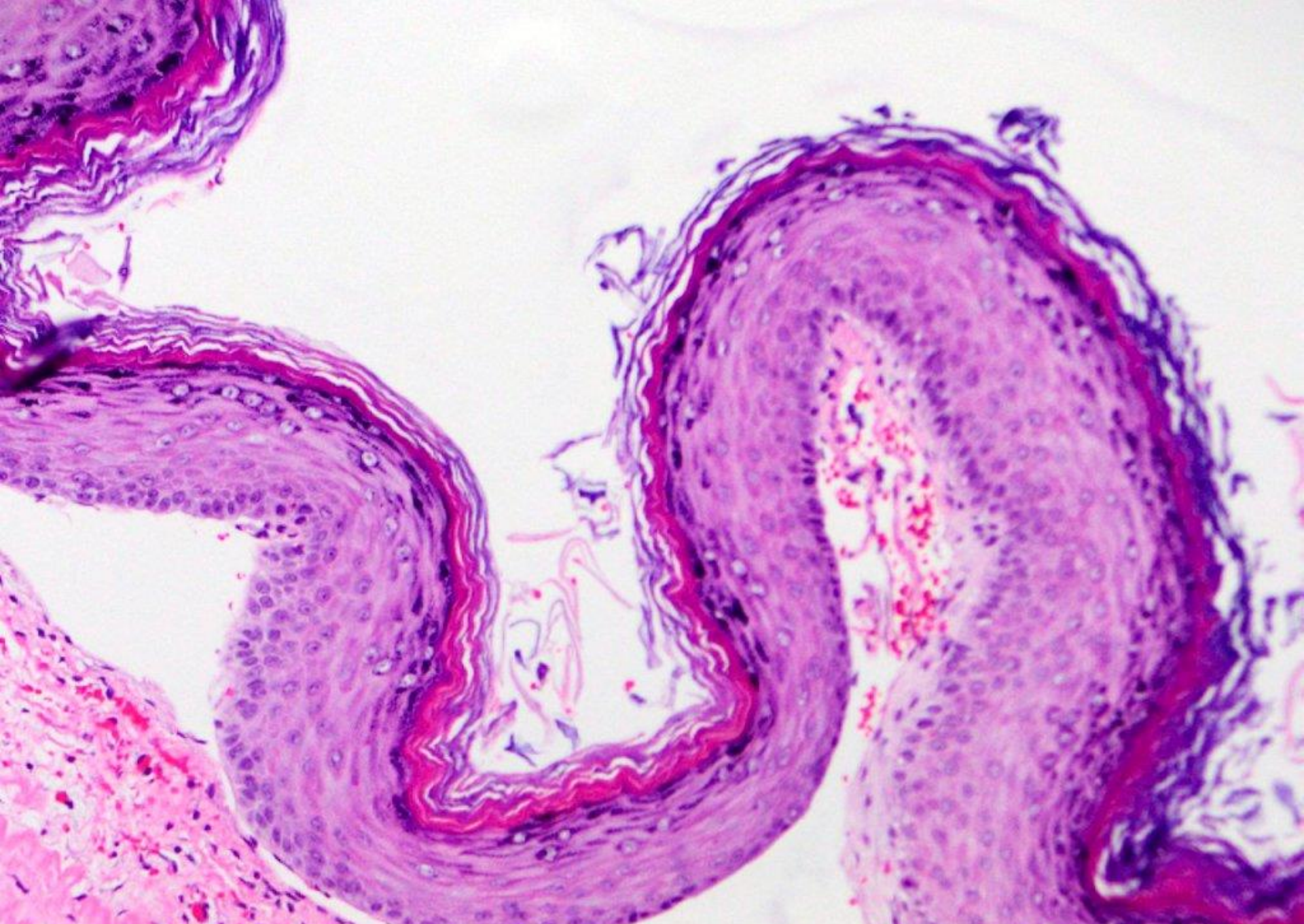




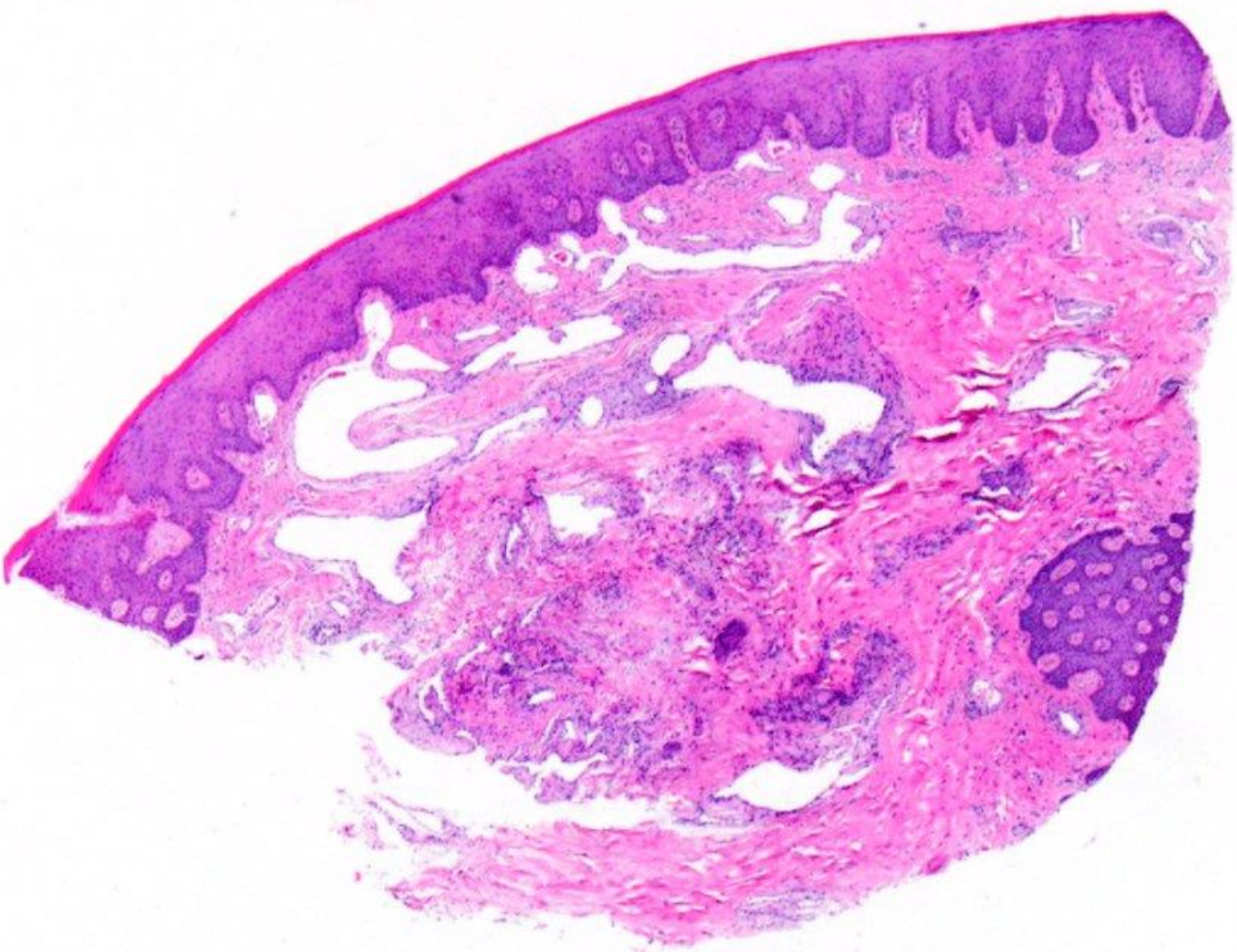


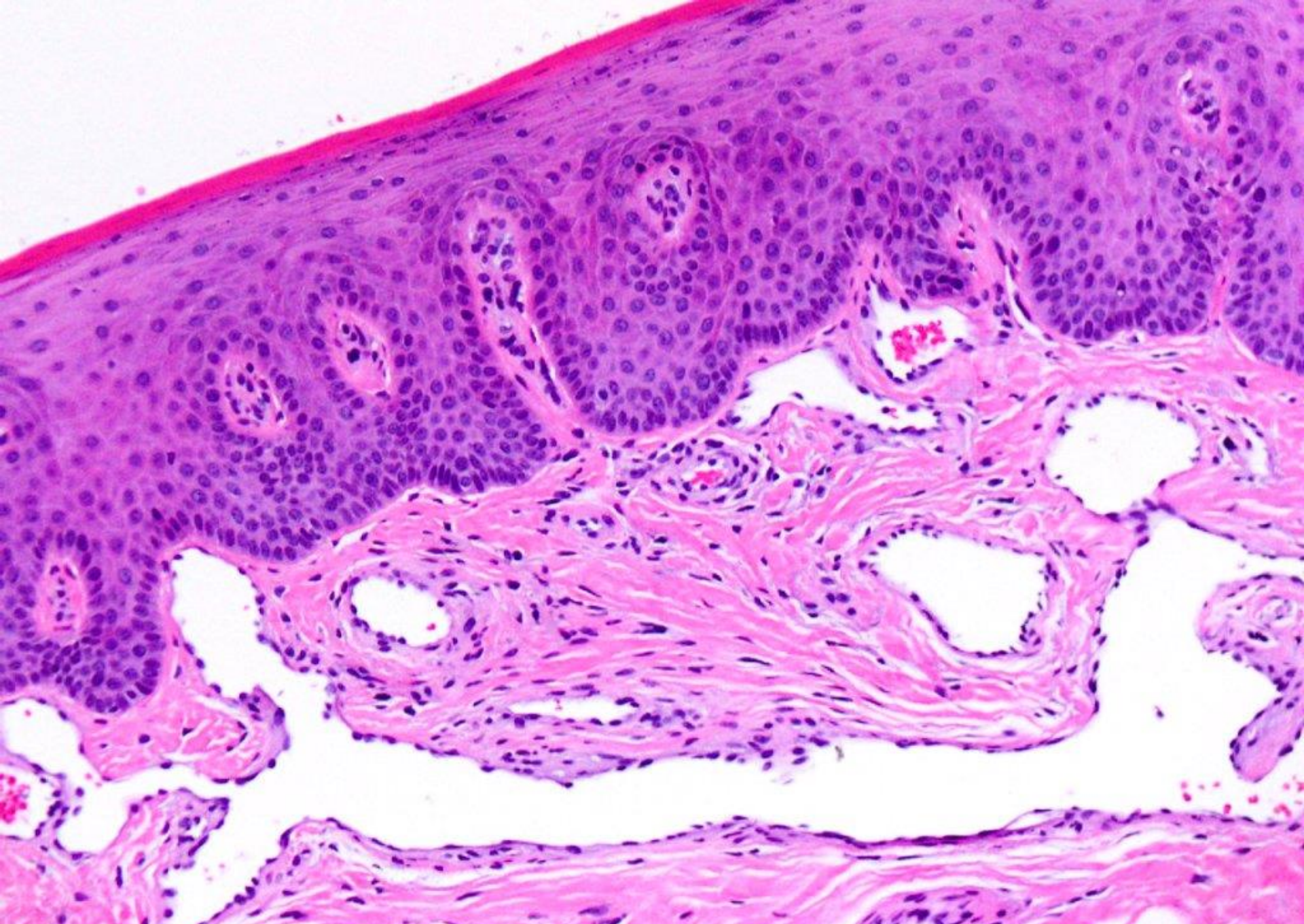
subepithelial blistering c/w pemphigoid



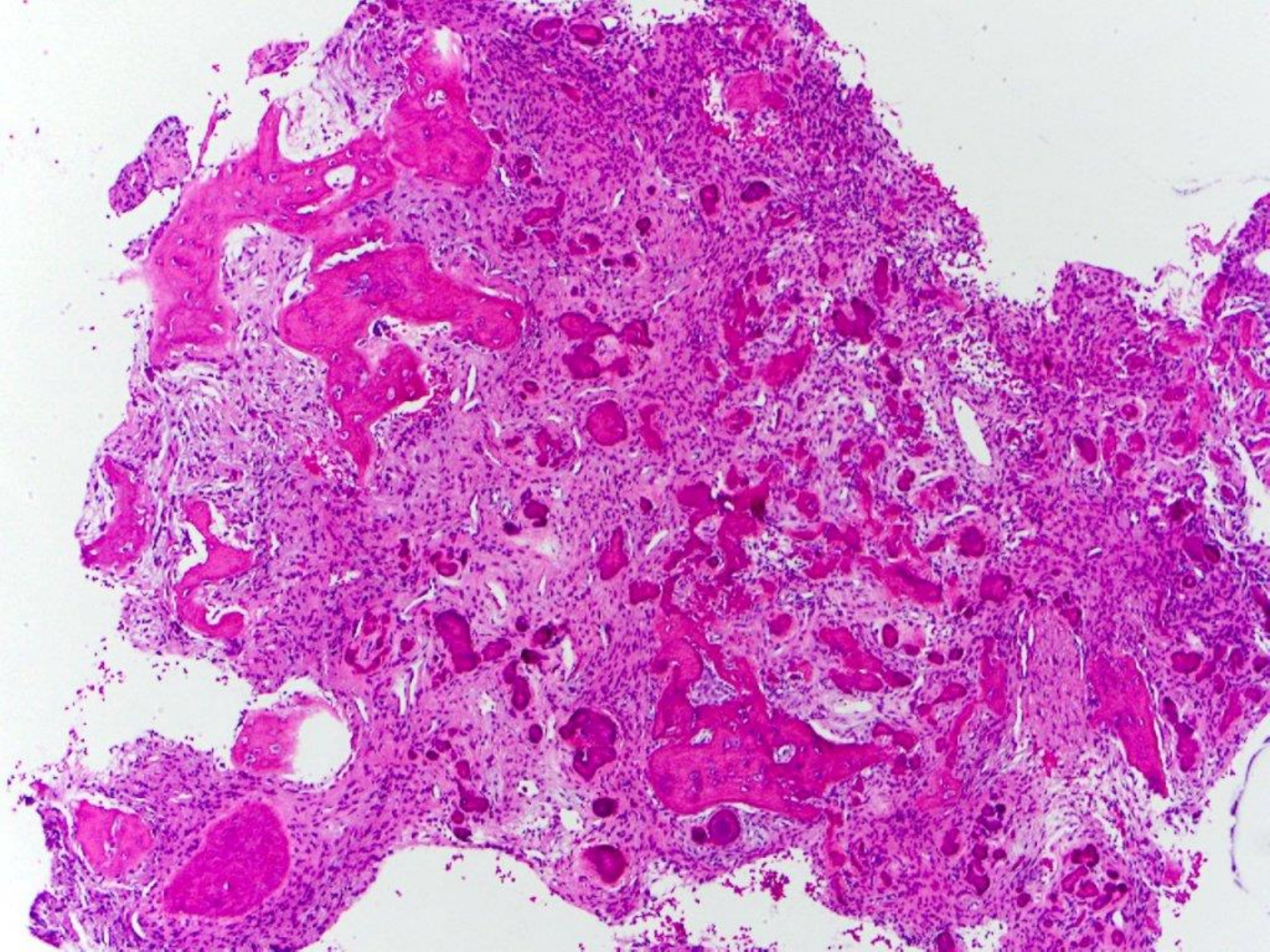


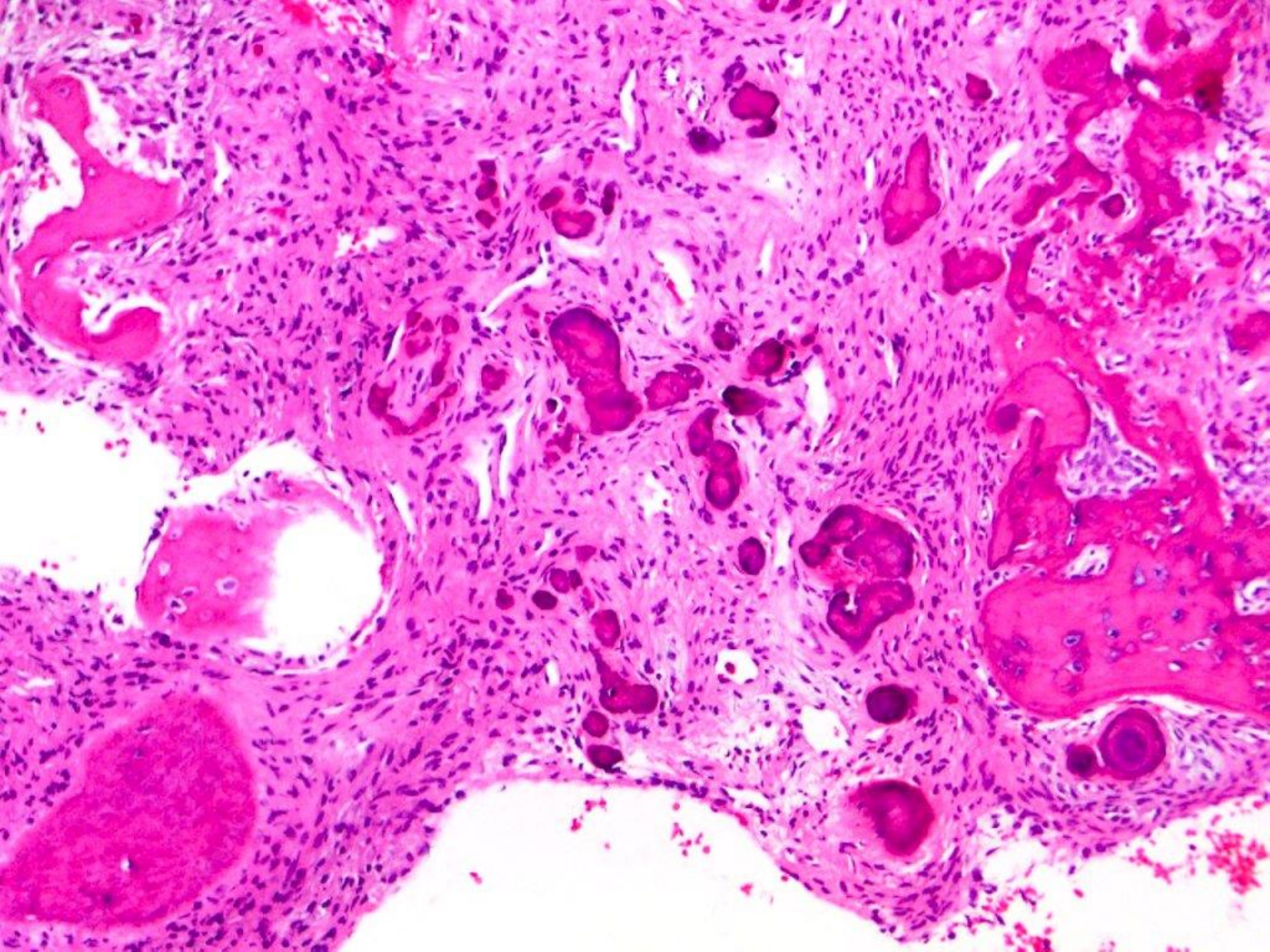
epidermoid cyst

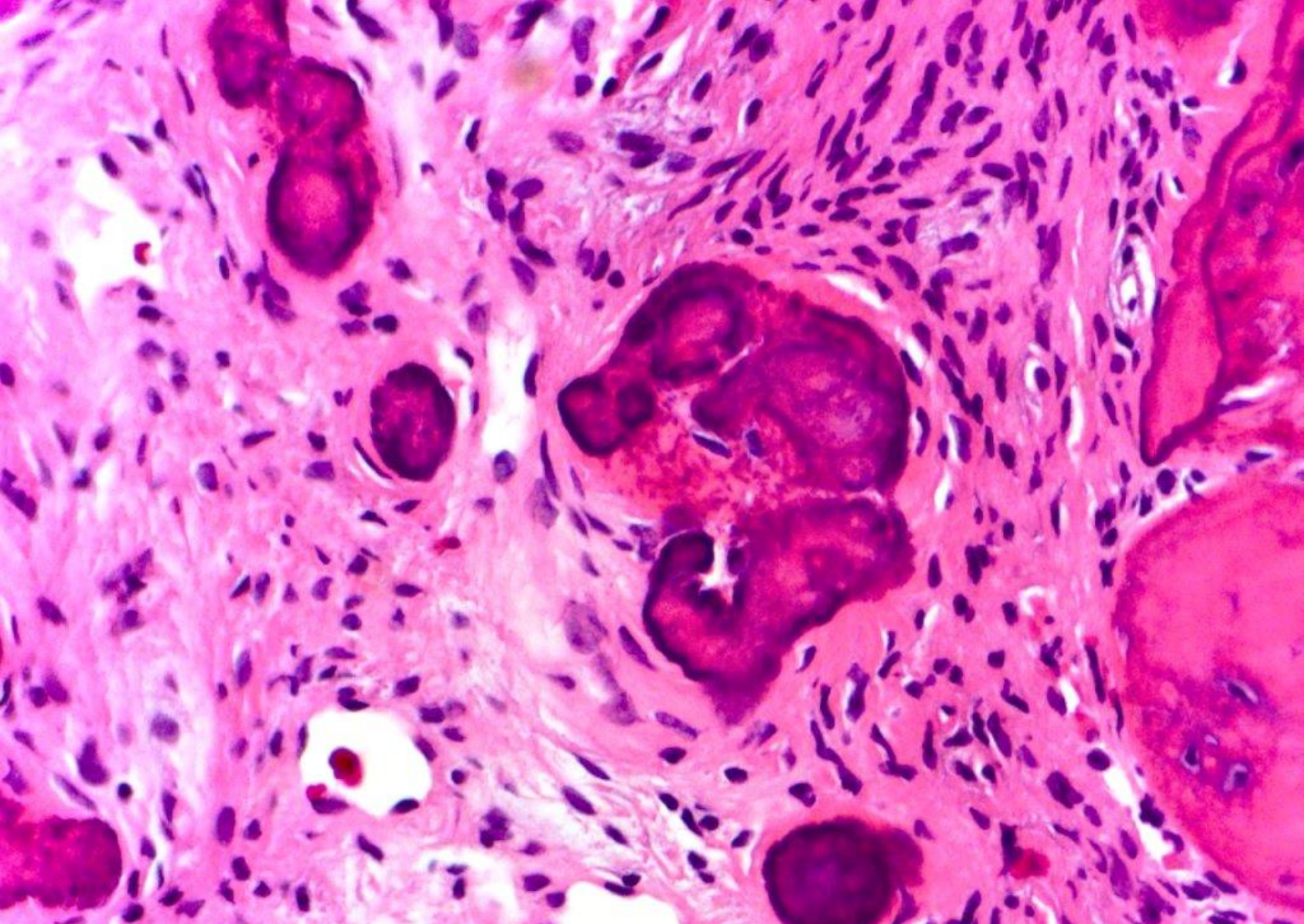




cavernous hemangioma







benign fibro-osseous lesion c/w cemento-osseous dysplasia